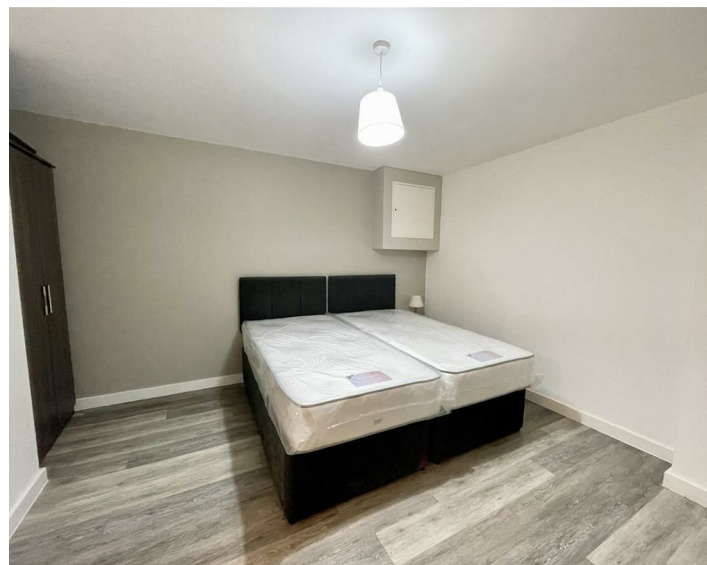




Apt 43 4 Leigh Street, Liverpool, L1 1NT  
£800 PCM

www.  
cityresidential  
.co.uk





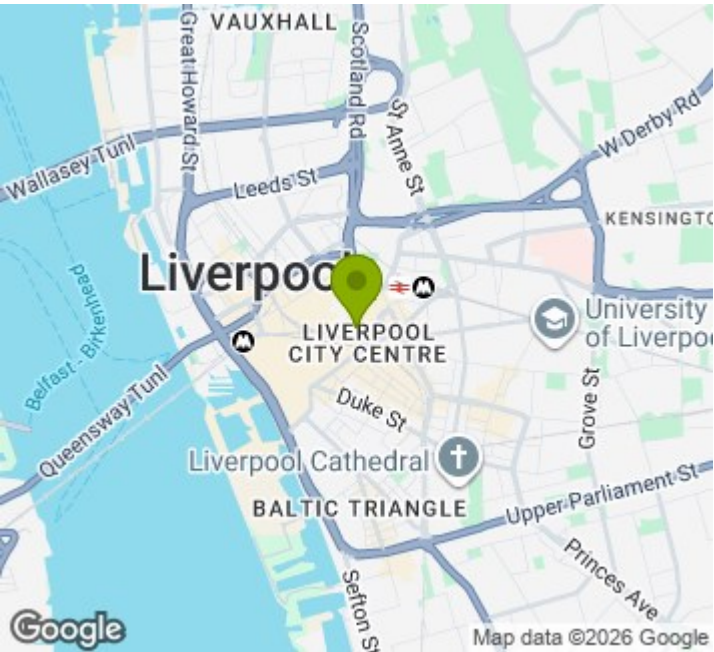
About the Property

Available to Let is this well presented , studio apartment in the heart of Liverpool City Centre. Situated on Leigh Street, it is ideally located for all the amenities the city centre has to offer and is just a short walk from both Liverpool Central and Liverpool Lime Street Stations. The accommodation further benefits from double glazing and integrated white goods in the kitchen.

This development is serviced by a lift to all floors. There is no parking available at this development.

EPC Rating - C. Council Tax Band - A. A deposit amount of £923.00 is payable upon moving in. Call us now to arrange a viewing.

- EPC - C
- Council Tax Band - A
- Deposit Payable £923.00
- Studio Apartment
- No Parking



Energy Efficiency Rating

	Current	Potential
Very energy efficient - lower running costs		
(92 plus) <b>A</b>		
(81-91) <b>B</b>		
(69-80) <b>C</b>	<b>76</b>	<b>76</b>
(55-68) <b>D</b>		
(39-54) <b>E</b>		
(21-38) <b>F</b>		
(1-20) <b>G</b>		
Not energy efficient - higher running costs		
<b>England &amp; Wales</b>	EU Directive 2002/91/EC	



City Residential  
81/87 Victoria Street, The Old Haymarket, Liverpool L1 6DG  
T: 0151 231 6100 F: 0151 231 6105  
E: sales@cityresidential.co.uk



WWW.  
cityresidential  
.co.uk